

\$650,000 - # #17 27018 Sh 633 Hi, Rural Sturgeon County

MLS® #E4311622

\$650,000

Bedroom, Bathroom,
Land Commercial on 0.46 Acres

Villeneuve Airport Industrial Park, Rural
Sturgeon County, AB

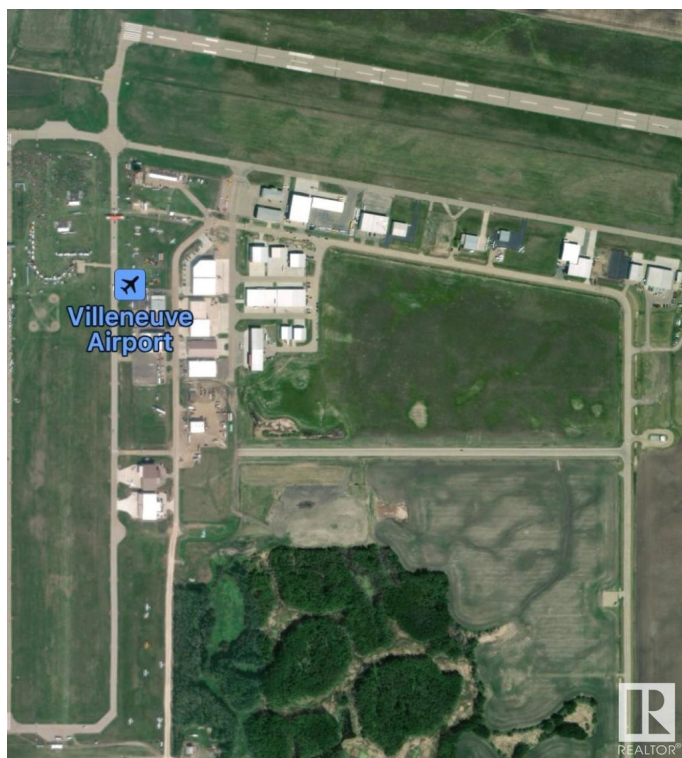
An opportunity to OWN your land at the Villeneuve Airport! This 0.46 acre lot backs onto Taxiway "B" and is cleared and ready for development with municipal services at lot line. Villeneuve airport is EIA's satellite airport and is located only 35 minutes from downtown Edmonton and offers a congestion free and accessible location with a wide range of services for private and commercial operations. The airport currently offers GPS approaches, NAV Canada Air Traffic Control Tower, ILS operations and Canada Border Services Agency (CBSA) airport of entry CANPASS designation. A Strategic Plan in place for future development and expansion.

Essential Information

MLS® #	E4311622
Price	\$650,000
Acres	0.46
Type	Land Commercial

Community Information

Address	# #17 27018 Sh 633 Hi
Area	Sturgeon
Subdivision	Villeneuve Airport Industrial Park



City	Rural Sturgeon County
Province	AB
Postal Code	T8T 0E3

Amenities

Features	Airport Nearby, See Remarks
----------	-----------------------------

Additional Information

Date Listed	September 1st, 2022
Zoning	AP

DATA IS DEEMED RELIABLE BUT IS NOT GUARANTEED ACCURATE BY THE REALTORS® ASSOCIATION OF EDMONTON. COPYRIGHT 2024 BY THE REALTORS® ASSOCIATION OF EDMONTON. ALL RIGHTS RESERVED.Trademarks are owned or controlled by the Canadian Real Estate Association (CREA) and identify real estate professionals who are members of CREA (REALTOR®, REALTORS®) and/or the quality of services they provide (MLS®, Multiple Listing Service®)

Listing information last updated on April 29th, 2024 at 11:16pm MDT