

\$1,198,000 - 6005 Naden Landing, Edmonton

MLS® #E4429330

\$1,198,000

4 Bedroom, 3.00 Bathroom, 3,062 sqft

Single Family on 0.00 Acres

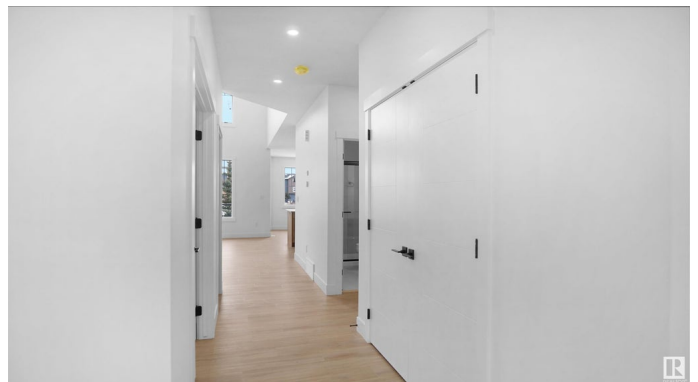
Griesbach, Edmonton, AB

Welcome home to this brand new luxury custom home designed and built by Finesse Homes and backing the lake in Griesbach. This home offers over 3,000+ sq ft that includes 4 bedrooms, main floor den, 4 full bathrooms, 10 ft ceiling, double oversized attached garage. The main level features the beautiful open concept family room with open to below and large windows that's wide open to the kitchen and nook. The main floor also has a spice kitchen and walk in pantry. To finish the main floor it comes with a den and full bath. The upper level has a large center bonus room a large primary bedroom with a 5 piece spa like ensuite, an additional 3 large bedrooms, a 4 piece bath and a laundry room. This home also comes with a full walkout basement perfect for future development. Incredible attention to detail & only the finest quality materials used.

Built in 2024

Essential Information

MLS® #	E4429330
Price	\$1,198,000
Bedrooms	4
Bathrooms	3.00
Full Baths	3
Square Footage	3,062



Acres	0.00
Year Built	2024
Type	Single Family
Sub-Type	Detached Single Family
Style	2 Storey
Status	Active

Community Information

Address	6005 Naden Landing Landing
Area	Edmonton
Subdivision	Griesbach
City	Edmonton
County	ALBERTA
Province	AB
Postal Code	T5E 6X6

Amenities

Amenities	Lake Privileges, Walkout Basement
Parking Spaces	4
Parking	Double Garage Attached, Over Sized
Is Waterfront	Yes

Interior

Interior Features	ensuite bathroom
Appliances	Dishwasher-Built-In, Garage Control, Garage Opener, Hood Fan, Oven-Built-In, Oven-Microwave, Refrigerator, Stove-Countertop Electric, Stove-Gas, See Remarks
Heating	Forced Air-1, Natural Gas
Stories	2
Has Basement	Yes
Basement	Full, Unfinished

Exterior

Exterior	Wood, Stone, Vinyl
Exterior Features	Backs Onto Lake, Fenced, Landscaped, Park/Reserve, Playground Nearby, Public Swimming Pool, Public Transportation, Schools, Shopping Nearby, See Remarks
Roof	Asphalt Shingles
Construction	Wood, Stone, Vinyl

Foundation Concrete Perimeter

Additional Information

Date Listed April 4th, 2025

Days on Market 29

Zoning Zone 27

DATA IS DEEMED RELIABLE BUT IS NOT GUARANTEED ACCURATE BY THE REALTORS® ASSOCIATION OF EDMONTON. COPYRIGHT 2025 BY THE REALTORS® ASSOCIATION OF EDMONTON. ALL RIGHTS RESERVED.Trademarks are owned or controlled by the Canadian Real Estate Association (CREA) and identify real estate professionals who are members of CREA (REALTOR®, REALTORS®) and/or the quality of services they provide (MLS®, Multiple Listing Service®)

Listing information last updated on May 2nd, 2025 at 10:02pm MDT