

## \$224,900 - 260 Callingwood Two Two, Edmonton

MLS® #E4432688

**\$224,900**

3 Bedroom, 1.50 Bathroom, 1,057 sqft

Condo / Townhouse on 0.00 Acres

Callingwood North, Edmonton, AB

This recently renovated end unit townhome exudes warmth and modern charm. Updated flooring, fresh paint, and new bathrooms set the stage for a space that effortlessly blends comfort with contemporary elegance. The thoughtfully designed main floor encompasses a kitchen, dining area, cozy living room, and convenient half-bath. Upstairs, 3 bedrooms with abundant natural light offer a serene haven for rest and relaxation. The 3-piece bath with a modern, tile and glass shower invites you to indulge in tranquil rejuvenation. The partially finished basement has a laundry and mechanical space, alongside a separate area that beckons with potential - create the perfect entertainment hub or versatile living space. Outside, a large deck awaits, for summer dining or simply basking in the serenity of your private yard. Immerse yourself in the allure of Callingwood's west end location, where the vibrant spirit of the community harmonizes with the ease of access to local amenities and the beauty of nearby green spaces.

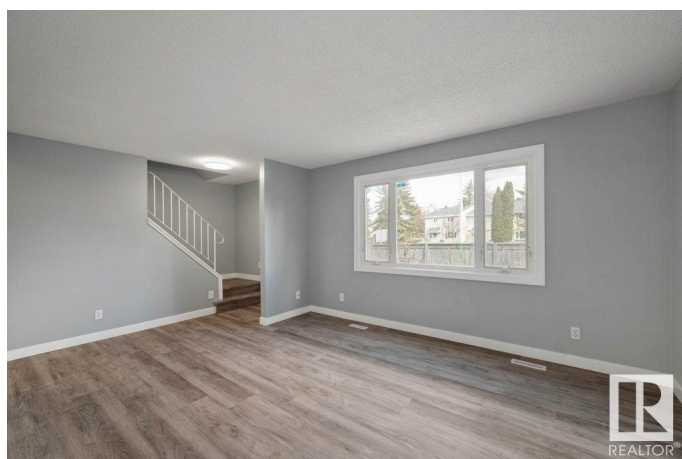
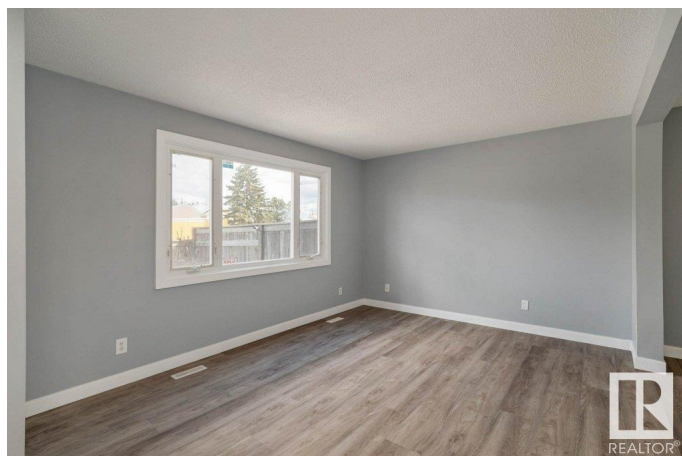
Built in 1974

### Essential Information

MLS® # E4432688

Price \$224,900

Bedrooms 3



Bathrooms	1.50
Full Baths	1
Half Baths	1
Square Footage	1,057
Acres	0.00
Year Built	1974
Type	Condo / Townhouse
Sub-Type	Townhouse
Style	2 Storey
Status	Active

### Community Information

Address	260 Callingwood Two Two
Area	Edmonton
Subdivision	Callingwood North
City	Edmonton
County	ALBERTA
Province	AB
Postal Code	T5T 1A3

### Amenities

Amenities	No Smoking Home
Parking	Stall

### Interior

Appliances	Dishwasher-Portable, Dryer, Refrigerator, Stove-Electric, Washer
Heating	Forced Air-1, Natural Gas
Stories	2
Has Basement	Yes
Basement	Full, Unfinished

### Exterior

Exterior	Wood, Stucco, Vinyl
Exterior Features	Fenced, Low Maintenance Landscape, No Through Road, Playground Nearby, Public Swimming Pool, Public Transportation, Recreation Use, Schools, Shopping Nearby
Roof	Asphalt Shingles
Construction	Wood, Stucco, Vinyl
Foundation	Concrete Perimeter

**Additional Information**

Date Listed	April 25th, 2025
Days on Market	8
Zoning	Zone 20
Condo Fee	\$346

DATA IS DEEMED RELIABLE BUT IS NOT GUARANTEED ACCURATE BY THE REALTORS® ASSOCIATION OF EDMONTON. COPYRIGHT 2025 BY THE REALTORS® ASSOCIATION OF EDMONTON. ALL RIGHTS RESERVED.Trademarks are owned or controlled by the Canadian Real Estate Association (CREA) and identify real estate professionals who are members of CREA (REALTOR®, REALTORS®) and/or the quality of services they provide (MLS®, Multiple Listing Service®)

Listing information last updated on May 2nd, 2025 at 10:02pm MDT