

Courtesy Of Sarah L Lizée Of RE/MAX Elite

## \$239,900 - 301 5102 49 Avenue, Leduc

MLS® #E4433141

**\$239,900**

2 Bedroom, 2.00 Bathroom, 860 sqft

Condo / Townhouse on 0.00 Acres

Linsford Park, Leduc, AB

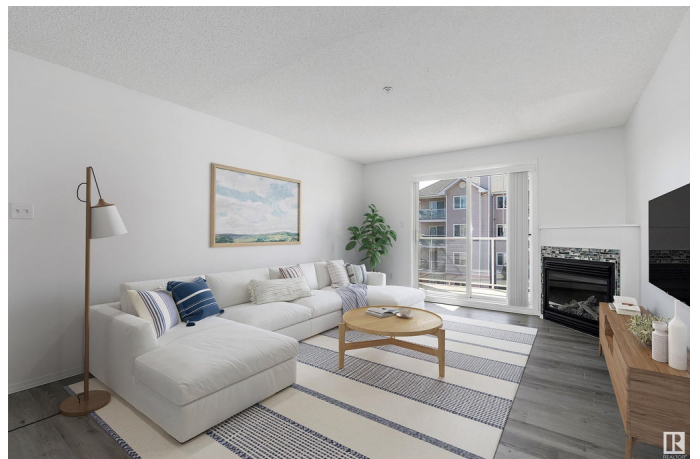
Welcome to Majestic Place East – a centrally located & highly sought-after 40+ condo in the heart of Leduc. This beautifully maintained home features an open-concept floor plan with a spacious kitchen equipped with newer appliances, & a generous living room centered around a cozy corner gas fireplace. The unit offers 2 large bedrooms, including a primary suite complete with a walk-through closet & a private 3-pc ensuite. An additional 4-pc bathroom is conveniently located off the main living area. Enjoy the ease of in-suite laundry with ample storage space, & relax outdoors on your private patio. Additional features include a titled parking stall & an assigned storage locker. Recent updates include new flooring, fresh paint, & updated door hardware. Condo fees cover heat, water, & sewer, adding even more value to this move-in-ready home. Located in one of Leduc's most popular communities, Majestic Place East offers the perfect blend of comfort, convenience, & lifestyle. Some photos may be virtually staged

Built in 2000

### Essential Information

MLS® # E4433141

Price \$239,900



Bedrooms	2
Bathrooms	2.00
Full Baths	2
Square Footage	860
Acres	0.00
Year Built	2000
Type	Condo / Townhouse
Sub-Type	Lowrise Apartment
Style	Single Level Apartment
Status	Active

### Community Information

Address	301 5102 49 Avenue
Area	Leduc
Subdivision	Linsford Park
City	Leduc
County	ALBERTA
Province	AB
Postal Code	T9E 8H1

### Amenities

Amenities	Parking-Visitor, Patio, See Remarks
Parking	Heated, Parkade

### Interior

Interior Features	ensuite bathroom
Appliances	Dishwasher-Built-In, Dryer, Refrigerator, Stove-Electric, Washer, Window Coverings
Heating	Baseboard, Natural Gas
Fireplace	Yes
Fireplaces	Mantel
# of Stories	4
Stories	1
Has Basement	Yes
Basement	None, No Basement

### Exterior

Exterior	Wood, Stucco, Vinyl
Exterior Features	Airport Nearby, Golf Nearby, Playground Nearby, Shopping Nearby

Roof	Asphalt Shingles
Construction	Wood, Stucco, Vinyl
Foundation	Concrete Perimeter

**Additional Information**

Date Listed	April 28th, 2025
Days on Market	5
Zoning	Zone 81
Condo Fee	\$487

DATA IS DEEMED RELIABLE BUT IS NOT GUARANTEED ACCURATE BY THE REALTORS® ASSOCIATION OF EDMONTON. COPYRIGHT 2025 BY THE REALTORS® ASSOCIATION OF EDMONTON. ALL RIGHTS RESERVED.Trademarks are owned or controlled by the Canadian Real Estate Association (CREA) and identify real estate professionals who are members of CREA (REALTOR®, REALTORS®) and/or the quality of services they provide (MLS®, Multiple Listing Service®)

Listing information last updated on May 3rd, 2025 at 1:32pm MDT