

## \$849,900 - 6724 Crawford Way, Edmonton

MLS® #E4434370

**\$849,900**

7 Bedroom, 5.00 Bathroom, 2,970 sqft

Single Family on 0.00 Acres

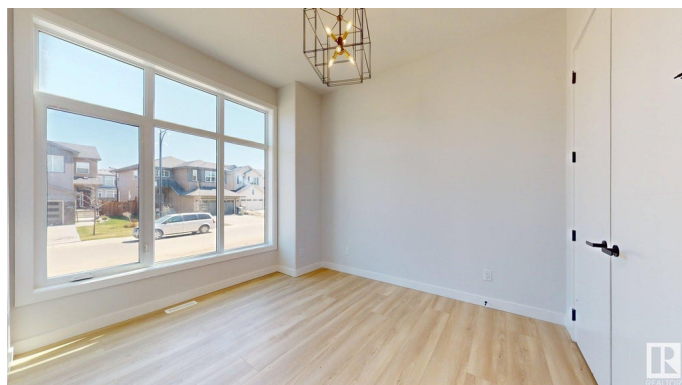
Chappelle Area, Edmonton, AB

Stunning brand new home in Chappelle offering nearly 3,000 sq. ft. above grade plus a fully finished 1,176 sq. ft. basement—ideal for large or multi-generational families! Boasting 7 bedrooms, 5 full baths, and a \$5,500 appliance credit, this home combines space and style. The main floor features an open-concept layout with a spacious living area, modern fireplace, full bedroom, and 3-pc bath. The sleek island kitchen includes quartz countertops, walk-in pantry, mosaic backsplash, and breakfast nook. A dedicated mudroom adds function. Upstairs you'll find 4 bedrooms, including a gorgeous primary suite with a 5-pc ensuite and walk-in closet, plus a bonus room and laundry. The basement offers a second kitchen, 2 bedrooms, and a full bath—perfect for extended family or guests. Located close to parks, schools, and shopping, this home is move-in ready and built for modern family living!

Built in 2024

### Essential Information

|            |           |
|------------|-----------|
| MLS® #     | E4434370  |
| Price      | \$849,900 |
| Bedrooms   | 7         |
| Bathrooms  | 5.00      |
| Full Baths | 5         |



|                |                        |
|----------------|------------------------|
| Square Footage | 2,970                  |
| Acres          | 0.00                   |
| Year Built     | 2024                   |
| Type           | Single Family          |
| Sub-Type       | Detached Single Family |
| Style          | 2 Storey               |
| Status         | Active                 |

### Community Information

|             |                   |
|-------------|-------------------|
| Address     | 6724 Crawford Way |
| Area        | Edmonton          |
| Subdivision | Chappelle Area    |
| City        | Edmonton          |
| County      | ALBERTA           |
| Province    | AB                |
| Postal Code | T6W 1A6           |

### Amenities

|                |                        |
|----------------|------------------------|
| Amenities      | Closet Organizers      |
| Parking Spaces | 4                      |
| Parking        | Double Garage Attached |

### Interior

|                   |   |
|-------------------|---|
| Interior Features | ensuite bathroom                        |
| Appliances        | See Remarks                             |
| Heating           | Forced Air-1, Forced Air-2, Natural Gas |
| Fireplace         | Yes                                     |
| Fireplaces        | Tile Surround                           |
| Stories           | 3                                       |
| Has Suite         | Yes                                     |
| Has Basement      | Yes                                     |
| Basement          | Full, Finished                          |

### Exterior

|                   |  |
|-------------------|--|
| Exterior          | Wood, Stone, Vinyl   |
| Exterior Features | Back Lane, Flat Site, Low Maintenance Landscape, Park/Reserve, Playground Nearby, Schools, Shopping Nearby |
| Roof              | Asphalt Shingles   |
| Construction      | Wood, Stone, Vinyl   |

Foundation                Concrete Perimeter

**School Information**

Elementary                Donald R.GETTY School  
Middle                     Donald R.GETTY School  
High                        DR.ANNE ANDERSON SCHOOL

**Additional Information**

Date Listed                May 3rd, 2025  
Days on Market        45  
Zoning                     Zone 55

DATA IS DEEMED RELIABLE BUT IS NOT GUARANTEED ACCURATE BY THE REALTORS® ASSOCIATION OF EDMONTON. COPYRIGHT 2025 BY THE REALTORS® ASSOCIATION OF EDMONTON. ALL RIGHTS RESERVED.Trademarks are owned or controlled by the Canadian Real Estate Association (CREA) and identify real estate professionals who are members of CREA (REALTOR®, REALTORS®) and/or the quality of services they provide (MLS®, Multiple Listing Service®)  
Listing information last updated on June 16th, 2025 at 11:02pm MDT