

\$199,900 - 412 300 Spruce Ridge Road, Spruce Grove

MLS® #E4435597

\$199,900

2 Bedroom, 2.00 Bathroom, 934 sqft

Condo / Townhouse on 0.00 Acres

Spruce Ridge, Spruce Grove, AB

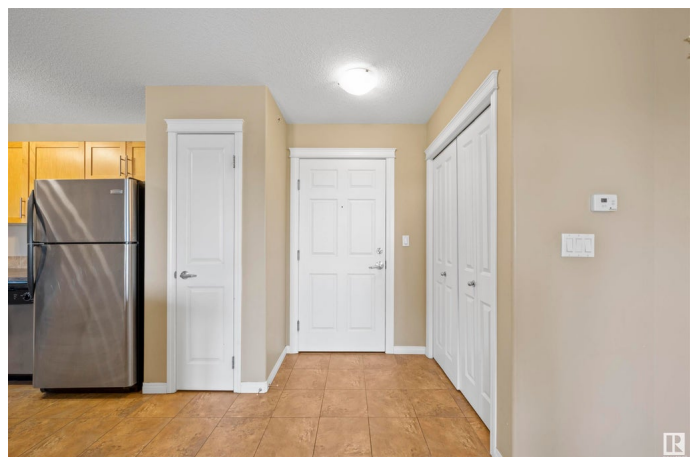
Top floor 2 bedroom condo in Spruce Ridge. A bright and spacious open concept suite in excellent condition. The kitchen features ample cabinets and counter space. The bedrooms are on opposite sides of the living room. The primary bedroom includes a walk through closet to a full bathroom with oversized shower. There is also a second full bathroom and large storage room. Comes with underground parking. Easy access to Highway 16 and very close to all amenities. Truly a must see.

Built in 2009

Essential Information

MLS® #	E4435597
Price	\$199,900
Bedrooms	2
Bathrooms	2.00
Full Baths	2
Square Footage	934
Acres	0.00
Year Built	2009
Type	Condo / Townhouse
Sub-Type	Lowrise Apartment
Style	Single Level Apartment
Status	Active

Community Information



Address	412 300 Spruce Ridge Road
Area	Spruce Grove
Subdivision	Spruce Ridge
City	Spruce Grove
County	ALBERTA
Province	AB
Postal Code	T7X 0H6

Amenities

Amenities	Parking-Visitor, Secured Parking, Social Rooms, Vinyl Windows
Parking	Underground

Interior

Interior Features	ensuite bathroom
Appliances	Dishwasher-Built-In, Dryer, Microwave Hood Fan, Refrigerator, Stove-Electric, Washer
Heating	Forced Air-1, Natural Gas
# of Stories	4
Stories	1
Has Basement	Yes
Basement	None, No Basement

Exterior

Exterior	Wood, Vinyl
Exterior Features	Golf Nearby, Landscaped, Park/Reserve, Picnic Area, Playground Nearby, Public Swimming Pool, Public Transportation, Schools, Shopping Nearby
Roof	Asphalt Shingles
Construction	Wood, Vinyl
Foundation	Concrete Perimeter

Additional Information

Date Listed	May 9th, 2025
Days on Market	6
Zoning	Zone 91
Condo Fee	\$519

DATA IS DEEMED RELIABLE BUT IS NOT GUARANTEED ACCURATE BY THE REALTORS® ASSOCIATION OF EDMONTON. COPYRIGHT 2025 BY THE REALTORS® ASSOCIATION OF EDMONTON. ALL RIGHTS RESERVED. Trademarks are owned or controlled by the Canadian Real Estate Association (CREA) and identify real estate professionals who are members of CREA (REALTOR®, REALTORS®) and/or the quality of services they

provide (MLS®®, Multiple Listing Service®®)
Listing information last updated on May 15th, 2025 at 6:32am MDT