

\$339,888 - 4229 30 Street, Edmonton

MLS® #E4436369

\$339,888

3 Bedroom, 2.50 Bathroom, 1,292 sqft

Condo / Townhouse on 0.00 Acres

Larkspur, Edmonton, AB

This bright end unit townhouse in Larkspur Landing offers unbeatable value in a sought-after, family-friendly complex. Enjoy the convenience of living minutes from everythingâ€”walking distance to schools, parks, grocery stores, restaurants, and major amenities. Whether you commute downtown, to the south side, or elsewhere, youâ€™ll love the quick access to public transit, Whitemud Drive, and Anthony Henday. Inside, the open-concept layout is both spacious and functional, filled with natural light throughout. The kitchen features upgraded granite countertops, a pantry, and access to your own private balconyâ€”perfect for morning coffee or evening relaxation. Upstairs, youâ€™ll find three generously sized bedrooms and two full bathrooms, including a large primary suite with its own ensuite. With low condo fees, ample storage, and a smart layout, this home is ideal for families, professionals, or investors looking for a well-maintained property in a convenient southeast location.

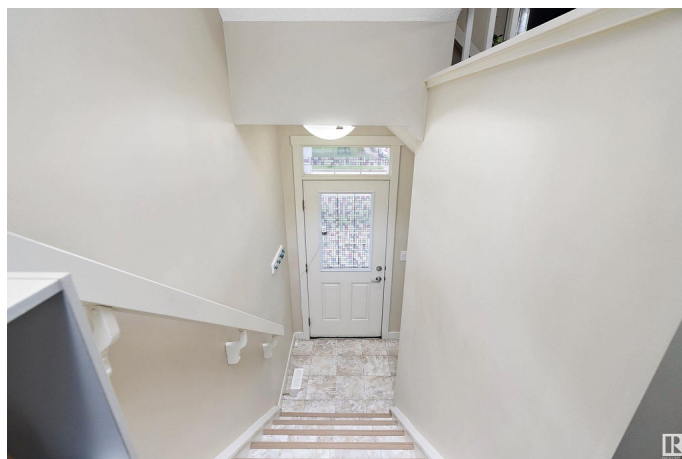
Built in 2016

Essential Information

MLS® # E4436369

Price \$339,888

Bedrooms 3



Bathrooms	2.50
Full Baths	2
Half Baths	1
Square Footage	1,292
Acres	0.00
Year Built	2016
Type	Condo / Townhouse
Sub-Type	Townhouse
Style	2 Storey
Status	Active

Community Information

Address	4229 30 Street
Area	Edmonton
Subdivision	Larkspur
City	Edmonton
County	ALBERTA
Province	AB
Postal Code	T6X 1V1

Amenities

Amenities	Detectors Smoke, No Animal Home, No Smoking Home, Parking-Visitor, See Remarks
Parking	Double Garage Attached

Interior

Interior Features	ensuite bathroom
Appliances	Dishwasher-Built-In, Dryer, Microwave Hood Fan, Refrigerator, Stove-Electric, Washer, Window Coverings
Heating	Forced Air-1, Natural Gas
Stories	3
Has Basement	Yes
Basement	Partial, Partially Finished

Exterior

Exterior	Wood, Vinyl
Exterior Features	Playground Nearby, Public Transportation, Schools, Shopping Nearby, See Remarks
Roof	Asphalt Shingles

Construction	Wood, Vinyl
Foundation	Concrete Perimeter

School Information

Elementary	Velma E. Baker School
Middle	Thelma Chalifoux School
High	Elder Dr. Francis Whiskeyj

Additional Information

Date Listed	May 14th, 2025
Days on Market	4
Zoning	Zone 30
Condo Fee	\$195

DATA IS DEEMED RELIABLE BUT IS NOT GUARANTEED ACCURATE BY THE REALTORS® ASSOCIATION OF EDMONTON. COPYRIGHT 2025 BY THE REALTORS® ASSOCIATION OF EDMONTON. ALL RIGHTS RESERVED.Trademarks are owned or controlled by the Canadian Real Estate Association (CREA) and identify real estate professionals who are members of CREA (REALTOR®, REALTORS®) and/or the quality of services they provide (MLS®, Multiple Listing Service®)

Listing information last updated on May 18th, 2025 at 8:47pm MDT