

Courtesy Of Thomas Kube Of Black Sheep Realty

## \$229,900 - 206 10421 42 Avenue, Edmonton

MLS® #E4436695

**\$229,900**

2 Bedroom, 2.00 Bathroom, 1,164 sqft

Condo / Townhouse on 0.00 Acres

Rideau Park (Edmonton), Edmonton, AB

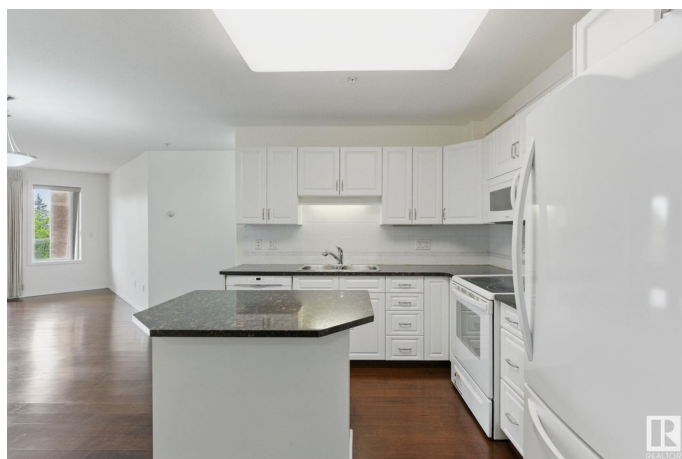
Welcome to the prestigious, spacious 2-bed + den, 2-bath unit offers comfortable adult living (18+) in desirable Rideau Park. Features include a granite kitchen, large bedrooms both with walk-in closets, in-suite laundry, and a balcony with natural gas hookup overlooking a quiet, tree-lined backroad. Impressive amenities: fitness centre, hobby room, recreation room, and a car wash in your heated underground parking (with storage locker). Ideal location near Southgate, Whitemud Dr, transit, shopping & dining.

Built in 1997

### Essential Information

MLS® #	E4436695
Price	\$229,900
Bedrooms	2
Bathrooms	2.00
Full Baths	2
Square Footage	1,164
Acres	0.00
Year Built	1997
Type	Condo / Townhouse
Sub-Type	Lowrise Apartment
Style	Single Level Apartment
Status	Active

### Community Information



Address	206 10421 42 Avenue
Area	Edmonton
Subdivision	Rideau Park (Edmonton)
City	Edmonton
County	ALBERTA
Province	AB
Postal Code	T6J 7C8

### **Amenities**

Amenities	On Street Parking, Car Wash, Closet Organizers, Detectors Smoke, Exercise Room, No Animal Home, No Smoking Home, Parking-Visitor, Party Room, Secured Parking, Social Rooms, Vinyl Windows, Storage Cage, Natural Gas BBQ Hookup
Parking Spaces	1
Parking	Heated, Underground

### **Interior**

Interior Features	ensuite bathroom
Appliances	Dishwasher-Built-In, Dryer, Oven-Microwave, Refrigerator, Stove-Electric, Washer, Window Coverings
Heating	In Floor Heat System, Natural Gas
# of Stories	3
Stories	1
Has Basement	Yes
Basement	None, No Basement

### **Exterior**

Exterior	Wood, Stucco
Exterior Features	Landscaped, Playground Nearby, Public Transportation, Shopping Nearby, See Remarks
Roof	Asphalt Shingles
Construction	Wood, Stucco
Foundation	Concrete Perimeter

### **Additional Information**

Date Listed	May 15th, 2025
Days on Market	8
Zoning	Zone 16
Condo Fee	\$567

DATA IS DEEMED RELIABLE BUT IS NOT GUARANTEED ACCURATE BY THE REALTORS® ASSOCIATION OF EDMONTON. COPYRIGHT 2025 BY THE REALTORS® ASSOCIATION OF EDMONTON. ALL RIGHTS RESERVED.Trademarks are owned or controlled by the Canadian Real Estate Association (CREA) and identify real estate professionals who are members of CREA (REALTOR®, REALTORS®) and/or the quality of services they provide (MLS®, Multiple Listing Service®)

Listing information last updated on May 22nd, 2025 at 11:17pm MDT