

\$419,900 - 6863 Cardinal Link Link, Edmonton

MLS® #E4438672

\$419,900

3 Bedroom, 2.50 Bathroom, 1,326 sqft
Single Family on 0.00 Acres

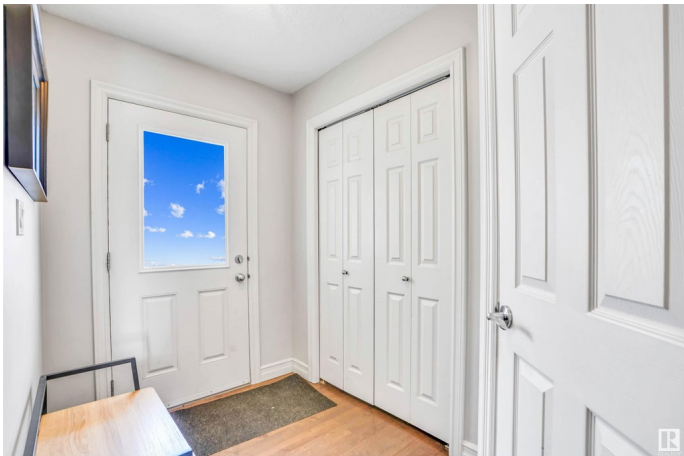
Chappelle Area, Edmonton, AB

Immaculate half duplex in Chappelle, SW Edmonton! This 2-storey home offers over 1300 sqft of living space. It features 3 spacious bedrooms, including a master suite with a walk-in closet and 3pc ensuite. Another full bathroom is upstairs, with a 2pc on the main for guests. The main floor boasts hardwood throughout and a kitchen with a large island and granite countertops. The living room offers plenty of space to relax. The fully finished basement has a large living room, ideal for gatherings. Enjoy the convenience of an attached garage and a large front driveway with ample visitor parking. The massive backyard and back deck are perfect for entertaining or enjoying a quiet coffee. Whether it's your first home, you're downsizing, or seeking an investment, this home truly checks all the boxes!

Built in 2013

Essential Information

MLS® #	E4438672
Price	\$419,900
Bedrooms	3
Bathrooms	2.50
Full Baths	2
Half Baths	1
Square Footage	1,326



Acres	0.00
Year Built	2013
Type	Single Family
Sub-Type	Half Duplex
Style	2 Storey
Status	Active

Community Information

Address	6863 Cardinal Link Link
Area	Edmonton
Subdivision	Chappelle Area
City	Edmonton
County	ALBERTA
Province	AB
Postal Code	T6W 1Z1

Amenities

Amenities	Deck, Detectors Smoke, See Remarks
Parking	Single Garage Attached

Interior

Interior Features	ensuite bathroom
Appliances	Dishwasher-Built-In, Dryer, Garage Control, Garage Opener, Microwave Hood Fan, Refrigerator, Stove-Electric, Washer, Window Coverings
Heating	Forced Air-1, Natural Gas
Stories	2
Has Basement	Yes
Basement	Full, Partially Finished

Exterior

Exterior	Wood, Stone, Vinyl
Exterior Features	Back Lane, Fenced, Landscaped, Park/Reserve, Playground Nearby, Public Transportation, Schools, Shopping Nearby, See Remarks
Roof	Asphalt Shingles
Construction	Wood, Stone, Vinyl
Foundation	Concrete Perimeter

Additional Information

Date Listed	May 27th, 2025
-------------	----------------

Days on Market	20
Zoning	Zone 55
HOA Fees	100
HOA Fees Freq.	Annually

DATA IS DEEMED RELIABLE BUT IS NOT GUARANTEED ACCURATE BY THE REALTORS® ASSOCIATION OF EDMONTON. COPYRIGHT 2025 BY THE REALTORS® ASSOCIATION OF EDMONTON. ALL RIGHTS RESERVED. Trademarks are owned or controlled by the Canadian Real Estate Association (CREA) and identify real estate professionals who are members of CREA (REALTOR®, REALTORS®) and/or the quality of services they provide (MLS®, Multiple Listing Service®)

Listing information last updated on June 16th, 2025 at 3:32pm MDT