

\$549,900 - 3565 Cherry Landing Landing, Edmonton

MLS® #E4438712

\$549,900

3 Bedroom, 2.50 Bathroom, 1,779 sqft

Single Family on 0.00 Acres

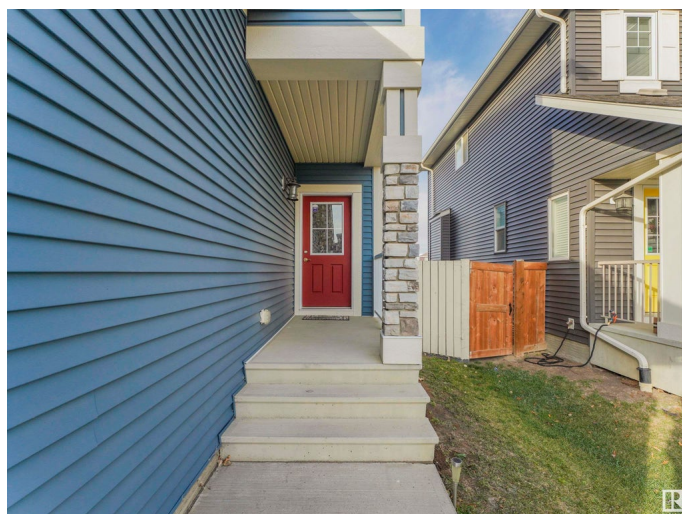
The Orchards At Ellerslie, Edmonton, AB

This charming two-story home with a double-attached garage features three bedrooms plus a bonus room and boasts fantastic finishes and a smart, efficient layout. Well maintained, this turnkey home offers an exceptional opportunity to live in the highly desirable community of The Orchards at Ellerslie. The home includes upgraded laminate flooring, stylish countertops, a fireplace, landscaped yard, deck, fenced backyard, and stainless steel appliances. The spacious open-concept main floor features a mudroom, while the upper level includes three generous bedrooms, a bonus room, a laundry room, and a luxurious 5-piece ensuite with a walk-through closet in the primary bedroom. The unfinished basement offers great potential for customization, allowing you to add value. Conveniently located near all amenities, this home is an excellent value for growing families.

Built in 2015

Essential Information

MLS® #	E4438712
Price	\$549,900
Bedrooms	3
Bathrooms	2.50
Full Baths	2



Half Baths	1
Square Footage	1,779
Acres	0.00
Year Built	2015
Type	Single Family
Sub-Type	Detached Single Family
Style	2 Storey
Status	Active

Community Information

Address	3565 Cherry Landing Landing
Area	Edmonton
Subdivision	The Orchards At Ellerslie
City	Edmonton
County	ALBERTA
Province	AB
Postal Code	T6X 2B5

Amenities

Amenities	Ceiling 9 ft.
Parking	Double Garage Attached

Interior

Interior Features	ensuite bathroom
Appliances	Dishwasher-Built-In, Dryer, Hood Fan, Refrigerator, Washer
Heating	Forced Air-1, Natural Gas
Stories	2
Has Basement	Yes
Basement	Full, Unfinished

Exterior

Exterior	Wood, Stone, Vinyl
Exterior Features	Park/Reserve, Schools, Shopping Nearby
Roof	Asphalt Shingles
Construction	Wood, Stone, Vinyl
Foundation	Concrete Perimeter

Additional Information

Date Listed	May 26th, 2025
-------------	----------------

Days on Market	100
Zoning	Zone 53
HOA Fees	450
HOA Fees Freq.	Annually

DATA IS DEEMED RELIABLE BUT IS NOT GUARANTEED ACCURATE BY THE REALTORS® ASSOCIATION OF EDMONTON. COPYRIGHT 2025 BY THE REALTORS® ASSOCIATION OF EDMONTON. ALL RIGHTS RESERVED. Trademarks are owned or controlled by the Canadian Real Estate Association (CREA) and identify real estate professionals who are members of CREA (REALTOR®, REALTORS®) and/or the quality of services they provide (MLS®, Multiple Listing Service®)

Listing information last updated on September 3rd, 2025 at 7:47pm MDT