

## \$499,900 - 19 Grenfell Avenue, St. Albert

MLS® #E4439135

**\$499,900**

4 Bedroom, 2.00 Bathroom, 1,217 sqft

Single Family on 0.00 Acres

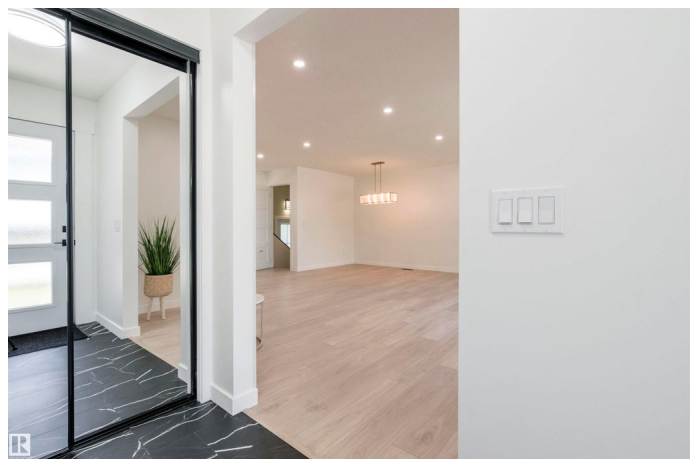
Grandin, St. Albert, AB

Step into this beautiful, fully finished and completely renovated over 2,000 sq ft house located in the highly desirable neighborhood of Grandin (St. Albert). The open floor plan is perfect for families, boasting a large living and dining room, kitchen with modern cabinets, tile backsplash, stainless steel appliances, gas stove and quartz countertops. A master bedroom is bright and spacious and has its own 3PC ensuite. In addition, you will also find 2 more bedrooms and 4PC main bath. The lower level is fully finished with large family/recreation room, 1 bedroom, laundry room, additional storage. Upgrades: All new windows triple pane low-E glass, all new doors, interior wood doors, main floor high end laminate. New attic insulation, serviced and cleaned furnace, pigtailed wires, new Hardie siding, soffit fascia, eavestrough. All old trees and vegetation are removed and ready for your landscaping desires. School, playground, park and walking trails make this property an ideal for any family.

Built in 1971

### Essential Information

MLS® #	E4439135
Price	\$499,900
Bedrooms	4



Bathrooms	2.00
Full Baths	2
Square Footage	1,217
Acres	0.00
Year Built	1971
Type	Single Family
Sub-Type	Detached Single Family
Style	Bungalow
Status	Active

### Community Information

Address	19 Grenfell Avenue
Area	St. Albert
Subdivision	Grandin
City	St. Albert
County	ALBERTA
Province	AB
Postal Code	T8N 0Y9

### Amenities

Amenities	No Animal Home, No Smoking Home
Parking	No Garage, Tandem

### Interior

Interior Features	ensuite bathroom
Appliances	Dishwasher-Built-In, Dryer, Microwave Hood Fan, Refrigerator, Stove-Gas, Washer
Heating	Forced Air-1, Natural Gas
Stories	2
Has Basement	Yes
Basement	Full, Finished

### Exterior

Exterior	Wood, Hardie Board Siding
Exterior Features	Backs Onto Park/Trees, Fenced, Playground Nearby, Public Transportation, Schools, Shopping Nearby
Roof	Asphalt Shingles
Construction	Wood, Hardie Board Siding
Foundation	Concrete Perimeter

**Additional Information**

Date Listed            May 29th, 2025  
Days on Market       84  
Zoning                 Zone 24

DATA IS DEEMED RELIABLE BUT IS NOT GUARANTEED ACCURATE BY THE REALTORS® ASSOCIATION OF EDMONTON. COPYRIGHT 2025 BY THE REALTORS® ASSOCIATION OF EDMONTON. ALL RIGHTS RESERVED.Trademarks are owned or controlled by the Canadian Real Estate Association (CREA) and identify real estate professionals who are members of CREA (REALTOR®, REALTORS®) and/or the quality of services they provide (MLS®, Multiple Listing Service®)  
Listing information last updated on August 20th, 2025 at 11:17pm MDT