

## \$174,000 - 203 105 Mckenney Avenue, St. Albert

MLS® #E4439641

**\$174,000**

2 Bedroom, 1.50 Bathroom, 1,022 sqft

Condo / Townhouse on 0.00 Acres

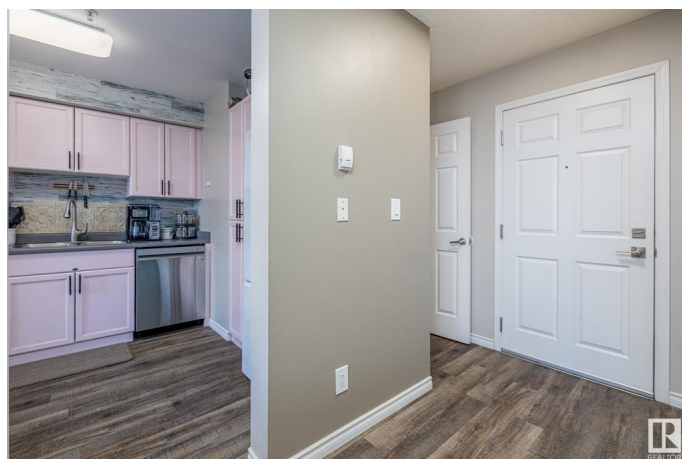
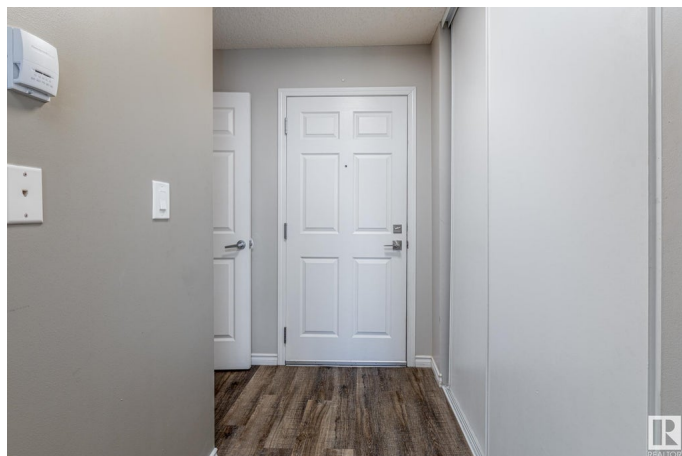
Lacombe Park, St. Albert, AB

Well Kept and UPGRADED! Newer Floors, paint, and stainless steel appliances (2022)! Don't miss this large, spacious TOP FLOOR 2 bed 1.5 bath townhome style apartment, with reasonable condo fees including both HEAT & WATER! Other perks include a spacious laundry room with cabinet space, a large storage closet, and vinyl windows! The building upgrades include a a sprinkler system, and renovated common area! Located close to the plentiful amenities of central St Albert, walking distance to Langley Park, Mission Park or St Albert's River Valley! This is a MUST SEE!

Built in 1977

### Essential Information

MLS® #	E4439641
Price	\$174,000
Bedrooms	2
Bathrooms	1.50
Full Baths	1
Half Baths	1
Square Footage	1,022
Acres	0.00
Year Built	1977
Type	Condo / Townhouse
Sub-Type	Lowrise Apartment



Style	2 Storey
Status	Active

### Community Information

Address	203 105 Mckenney Avenue
Area	St. Albert
Subdivision	Lacombe Park
City	St. Albert
County	ALBERTA
Province	AB
Postal Code	T8N 2Y2

### Amenities

Amenities	Deck, Detectors Smoke, No Animal Home, Parking-Plug-Ins, Parking-Visitor, Security Door, Sprinkler System-Fire, Storage-In-Suite, Vinyl Windows
Parking	Stall

### Interior

Appliances	Dishwasher-Built-In, Dryer, Microwave Hood Fan, Refrigerator, Stove-Electric, Washer
Heating	Baseboard, Natural Gas
# of Stories	2
Stories	2
Has Basement	Yes
Basement	None, No Basement

### Exterior

Exterior	Wood, Vinyl
Exterior Features	No Back Lane, Playground Nearby, Public Transportation, Schools, Shopping Nearby
Roof	Asphalt Shingles
Construction	Wood, Vinyl
Foundation	Concrete Perimeter

### Additional Information

Date Listed	May 30th, 2025
Days on Market	13
Zoning	Zone 24
Condo Fee	\$498

DATA IS DEEMED RELIABLE BUT IS NOT GUARANTEED ACCURATE BY THE REALTORS® ASSOCIATION OF EDMONTON. COPYRIGHT 2025 BY THE REALTORS® ASSOCIATION OF EDMONTON. ALL RIGHTS RESERVED.Trademarks are owned or controlled by the Canadian Real Estate Association (CREA) and identify real estate professionals who are members of CREA (REALTOR®, REALTORS®) and/or the quality of services they provide (MLS®, Multiple Listing Service®)

Listing information last updated on June 12th, 2025 at 6:02am MDT