

\$154,900 - 102 10810 86 Avenue, Edmonton

MLS® #E4439901

\$154,900

1 Bedroom, 1.00 Bathroom, 652 sqft

Condo / Townhouse on 0.00 Acres

Garneau, Edmonton, AB

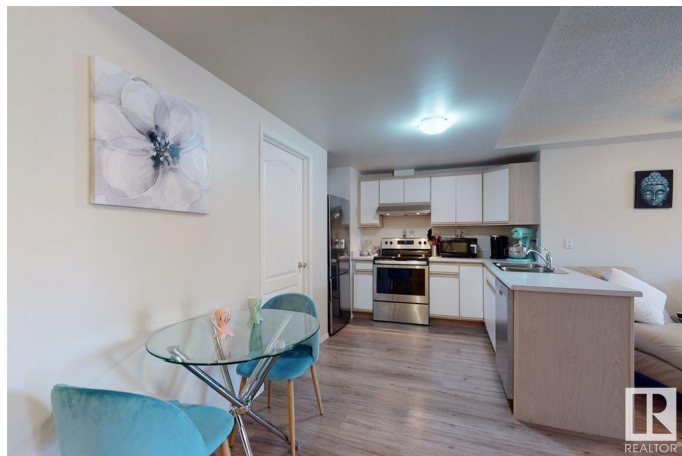
GORGEOUS!Â MODERN!Â Beautiful and completely renovated executive 1 bedroom condo in the heart of Garneau, walking distance to the U of A, steps from the Strathcona market and river valley. Feels like home immediately with it's large entrance and stunning vinyl flooring throughout.Â Designer colors and has open spacious floorplan.Â Great kitchen w/ loads of cabinet and countertops, highend stainless appliances and stepin pantry/laundry room for convenient storage.Â Cute eating nook opens to an oversized living area that could easily double with additional dining space.Â Off the living room steps onto a good sized patio which is surrounded with trees and hedges for privacy.Â Massive kingsized bedroom is bright with oversized windows and large enough for home office/study.Â WalkinÂ laundry room/pantry conveniently off the kitchen.Â Excellent complex on quaint quiet street, walking distance to Whyte Ave, coffee shops, trails, UofA & LRT. Perfect for working professionals, graduate student and empty nesters.

Built in 1992

Essential Information

MLS® # E4439901

Price \$154,900



Bedrooms	1
Bathrooms	1.00
Full Baths	1
Square Footage	652
Acres	0.00
Year Built	1992
Type	Condo / Townhouse
Sub-Type	Lowrise Apartment
Style	Single Level Apartment
Status	Active

Community Information

Address	102 10810 86 Avenue
Area	Edmonton
Subdivision	Garneau
City	Edmonton
County	ALBERTA
Province	AB
Postal Code	T6E 2N2

Amenities

Amenities	No Animal Home, No Smoking Home, Parking-Visitor, Patio, Security Door, Storage-In-Suite, Television Connection
Parking Spaces	1
Parking	Stall

Interior

Appliances	Dishwasher-Built-In, Dryer, Refrigerator, Stove-Electric, Washer, Window Coverings
Heating	Hot Water, Natural Gas
# of Stories	4
Stories	1
Has Basement	Yes
Basement	None, No Basement

Exterior

Exterior	Wood, Vinyl
Exterior Features	Flat Site, Fruit Trees/Shrubs, Golf Nearby, Landscaped, Paved Lane, Public Transportation, Shopping Nearby, See Remarks

Roof	Asphalt Shingles
Construction	Wood, Vinyl
Foundation	Concrete Perimeter

Additional Information

Date Listed	June 2nd, 2025
Days on Market	15
Zoning	Zone 15
Condo Fee	\$484

DATA IS DEEMED RELIABLE BUT IS NOT GUARANTEED ACCURATE BY THE REALTORS® ASSOCIATION OF EDMONTON. COPYRIGHT 2025 BY THE REALTORS® ASSOCIATION OF EDMONTON. ALL RIGHTS RESERVED.Trademarks are owned or controlled by the Canadian Real Estate Association (CREA) and identify real estate professionals who are members of CREA (REALTOR®, REALTORS®) and/or the quality of services they provide (MLS®, Multiple Listing Service®)

Listing information last updated on June 16th, 2025 at 10:47pm MDT