

\$329,900 - 22 4755 Terwillegar Common, Edmonton

MLS® #E4443733

\$329,900

2 Bedroom, 2.50 Bathroom, 1,399 sqft
Condo / Townhouse on 0.00 Acres

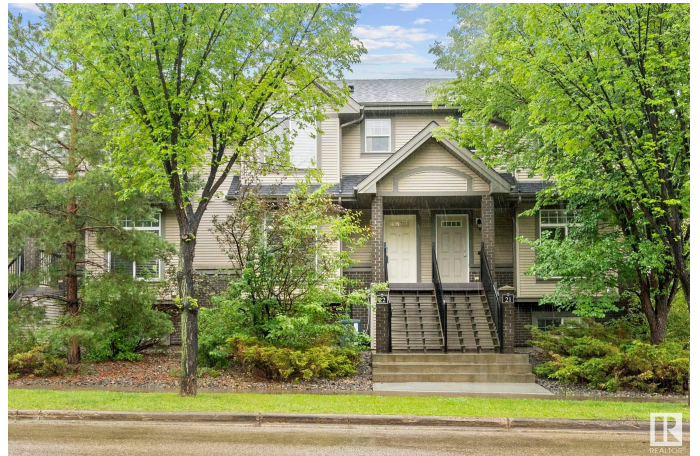
Terwillegar Towne, Edmonton, AB

Welcome to this fantastic two-bedroom townhouse located in the highly sought-after community of Terwillegar Towne. This well-maintained home features a bright and sunny kitchen with quartz counter tops, an additional dining nook, leading directly to a spacious balcony with bbq gas line – perfect for morning coffee or evening relaxation. The cozy living room includes a gas fireplace and is complemented by a designated dining area, creating a warm and inviting atmosphere. Upstairs, each generously sized bedroom comes with its own private ensuite also with quartz counters, &w/i closets, offering comfort and convenience. The basement adds valuable living space with a family room, ideal for entertaining or relaxing. Enjoy the ease of a double attached garage that allows direct access to your home, plus plenty of additional parking in front of the townhouse. Central Air-conditioning (2023) for those hot summer days! Situated within walking distance of schools, parks, shopping, and public transit. Furnace (2021)

Built in 2005

Essential Information

MLS® #	E4443733
Price	\$329,900



Bedrooms	2
Bathrooms	2.50
Full Baths	2
Half Baths	1
Square Footage	1,399
Acres	0.00
Year Built	2005
Type	Condo / Townhouse
Sub-Type	Townhouse
Style	2 Storey
Status	Active

Community Information

Address	22 4755 Terwillegar Common
Area	Edmonton
Subdivision	Terwillegar Towne
City	Edmonton
County	ALBERTA
Province	AB
Postal Code	T6R 3V6

Amenities

Amenities	Air Conditioner, Deck, Natural Gas BBQ Hookup
Parking	Double Garage Attached

Interior

Interior Features	ensuite bathroom
Appliances	Dishwasher-Built-In, Dryer, Garage Control, Garage Opener, Microwave Hood Fan, Refrigerator, Stove-Electric, Washer, Window Coverings
Heating	Forced Air-1, Natural Gas
Fireplace	Yes
Fireplaces	Mantel
Stories	3
Has Basement	Yes
Basement	Full, Finished

Exterior

Exterior	Wood, Vinyl
Exterior Features	Landscaped, Playground Nearby, Public Transportation, Schools,

	Shopping Nearby
Roof	Asphalt Shingles
Construction	Wood, Vinyl
Foundation	Concrete Perimeter

Additional Information

Date Listed	June 20th, 2025
Days on Market	16
Zoning	Zone 14
HOA Fees	138
HOA Fees Freq.	Annually
Condo Fee	\$325

DATA IS DEEMED RELIABLE BUT IS NOT GUARANTEED ACCURATE BY THE REALTORS® ASSOCIATION OF EDMONTON. COPYRIGHT 2025 BY THE REALTORS® ASSOCIATION OF EDMONTON. ALL RIGHTS RESERVED. Trademarks are owned or controlled by the Canadian Real Estate Association (CREA) and identify real estate professionals who are members of CREA (REALTOR®, REALTORS®) and/or the quality of services they provide (MLS®, Multiple Listing Service®)

Listing information last updated on July 5th, 2025 at 10:32pm MDT