

## \$275,000 - 87 Great Oaks, Sherwood Park

MLS® #E4445299

**\$275,000**

3 Bedroom, 2.50 Bathroom, 1,283 sqft  
Condo / Townhouse on 0.00 Acres

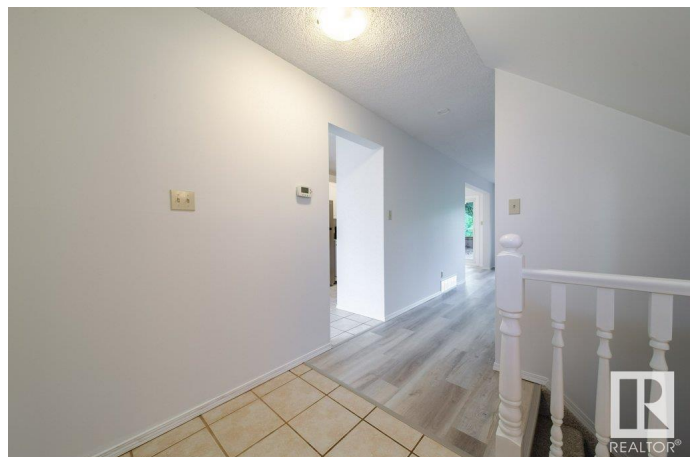
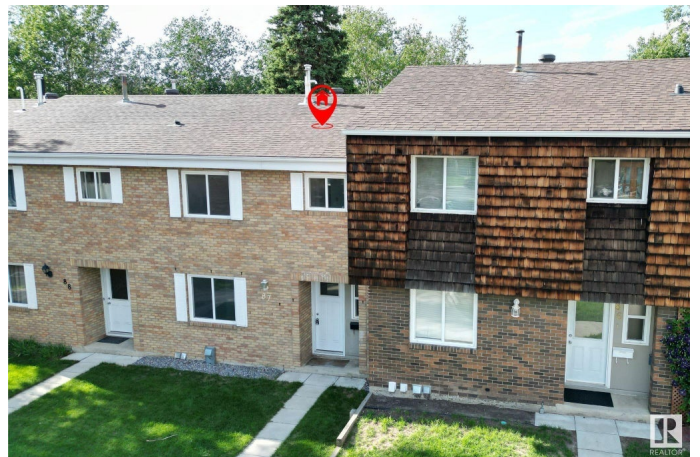
Broadmoor Estates, Sherwood Park, AB

**NEWLY RENOVATED & BACKING ONTO BROADMOOR GOLF COURSE!** Welcome to this move in ready 3 bedroom + 2.5 bathroom townhouse in Broadmoor Estates. Steps to walking trails, schools, Strathcona Library, Festival Way, Broadmoor Arena and Kinsmen Leisure Centre. Large south facing window provides tons of natural light. Brand new vinyl plank flooring on the main and upper floors & freshly painted throughout. New hardware and light fixtures. Refreshed kitchen features brand new appliances! Enjoy your morning coffee in the breakfast nook, and have plenty of room to host all your dinner parties in the formal dining space, with patio doors to your back yard facing the green of hole 10 on Broadmoor Golf Course. Upstairs there are 3 very spacious bedrooms and a large 4 pc bath. Fully finished basement with a large rec room with brand new carpet, and an extra flex room could be used as an office or den plus another 4 pc bathroom! This home is perfect for a 1st time home buyer or young family! (Photos virtually staged)

Built in 1970

### Essential Information

MLS® #	E4445299
Price	\$275,000



Bedrooms	3
Bathrooms	2.50
Full Baths	2
Half Baths	1
Square Footage	1,283
Acres	0.00
Year Built	1970
Type	Condo / Townhouse
Sub-Type	Townhouse
Style	2 Storey
Status	Active

### Community Information

Address	87 Great Oaks
Area	Sherwood Park
Subdivision	Broadmoor Estates
City	Sherwood Park
County	ALBERTA
Province	AB
Postal Code	T8A 0V8

### Amenities

Amenities	Off Street Parking, Deck, Vinyl Windows
Parking Spaces	1
Parking	Stall

### Interior

Appliances	Dishwasher-Built-In, Dryer, Hood Fan, Refrigerator, Stove-Electric, Washer
Heating	Forced Air-1, Natural Gas
Stories	3
Has Basement	Yes
Basement	Full, Finished

### Exterior

Exterior	Wood, Brick
Exterior Features	Backs Onto Park/Trees, Fenced, Golf Nearby, Low Maintenance Landscape, Playground Nearby, Private Setting, Public Transportation, Schools, Shopping Nearby

Roof	Asphalt Shingles
Construction	Wood, Brick
Foundation	Concrete Perimeter

**Additional Information**

Date Listed	July 2nd, 2025
Days on Market	1
Zoning	Zone 25
Condo Fee	\$305

DATA IS DEEMED RELIABLE BUT IS NOT GUARANTEED ACCURATE BY THE REALTORS® ASSOCIATION OF EDMONTON. COPYRIGHT 2025 BY THE REALTORS® ASSOCIATION OF EDMONTON. ALL RIGHTS RESERVED.Trademarks are owned or controlled by the Canadian Real Estate Association (CREA) and identify real estate professionals who are members of CREA (REALTOR®, REALTORS®) and/or the quality of services they provide (MLS®, Multiple Listing Service®)

Listing information last updated on July 3rd, 2025 at 10:18am MDT