

## \$410,000 - 405 Pioneer Road, Spruce Grove

MLS® #E4446313

**\$410,000**

3 Bedroom, 2.50 Bathroom, 1,412 sqft

Single Family on 0.00 Acres

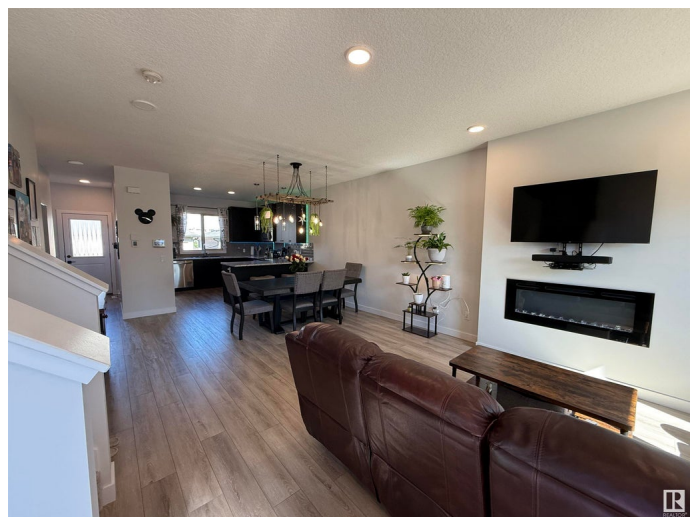
Greenbury, Spruce Grove, AB

This meticulously maintained 3 bedroom, 2.5 bathroom townhouse offers over 1100 sq ft of thoughtfully designed living space. Enjoy soaring ceilings, upgraded lighting, and a modern kitchen with stainless steel appliances. The open-concept main floor is perfect for everyday living and entertaining, while the upper level provides three spacious bedrooms, including a peaceful primary retreat. The unfinished basement features a large window, giving you the perfect opportunity to add a 4th bedroom or flex space. Step outside to one of the most beautifully kept yards aroundâ€”complete with garden boxes, a private patio area, and plenty of space to unwind. A double detached garage and ample street parking provide ultimate convenience. Located near the highly sought-after Prescott School, this home offers walkable access without the hassle of high traffic. Clean, stylish, and move-in readyâ€”this is the one youâ€™ve been waiting for!

Built in 2020

### Essential Information

MLS® #	E4446313
Price	\$410,000
Bedrooms	3
Bathrooms	2.50



Full Baths	2
Half Baths	1
Square Footage	1,412
Acres	0.00
Year Built	2020
Type	Single Family
Sub-Type	Residential Attached
Style	2 Storey
Status	Active

### Community Information

Address	405 Pioneer Road
Area	Spruce Grove
Subdivision	Greenbury
City	Spruce Grove
County	ALBERTA
Province	AB
Postal Code	T7X 0T2

### Amenities

Amenities	Deck, Detectors Smoke, No Smoking Home
Parking	Double Garage Detached

### Interior

Interior Features	ensuite bathroom
Appliances	Alarm/Security System, Dishwasher-Built-In, Dryer, Garage Opener, Microwave Hood Fan, Refrigerator, Stove-Electric, Washer, Window Coverings
Heating	Forced Air-1, Natural Gas
Fireplace	Yes
Fireplaces	Insert
Stories	2
Has Basement	Yes
Basement	Full, Unfinished

### Exterior

Exterior	Wood, Stone, Vinyl
Exterior Features	Public Transportation, Schools, Shopping Nearby
Roof	Asphalt Shingles

Construction Wood, Stone, Vinyl  
Foundation Concrete Perimeter

School Information

Elementary Prescott Learning Centre  
Middle Prescott Learning Centre  
High Composite High School

Additional Information

Date Listed July 7th, 2025  
Days on Market 4  
Zoning Zone 91



DATA IS DEEMED RELIABLE BUT IS NOT GUARANTEED ACCURATE BY THE REALTORS® ASSOCIATION OF EDMONTON. COPYRIGHT 2025 BY THE REALTORS® ASSOCIATION OF EDMONTON. ALL RIGHTS RESERVED.Trademarks are owned or controlled by the Canadian Real Estate Association (CREA) and identify real estate professionals who are members of CREA (REALTOR®, REALTORS®) and/or the quality of services they provide (MLS®, Multiple Listing Service®)  
Listing information last updated on July 11th, 2025 at 1:32am MDT