

\$229,000 - 126 Dickinsfield Court, Edmonton

MLS® #E4447567

\$229,000

1 Bedroom, 1.50 Bathroom, 1,056 sqft

Condo / Townhouse on 0.00 Acres

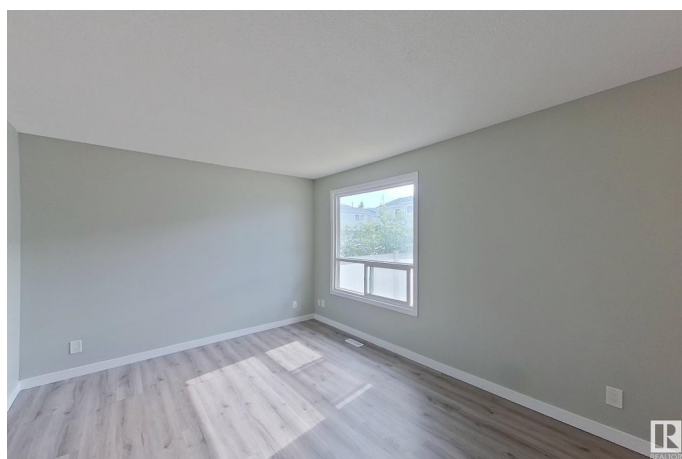
Evansdale, Edmonton, AB

This stunning 3-bedroom, 1.5-bathroom townhome in Dickinsfield Court is move-in ready with fresh, modern updates throughout. Enjoy the appeal of brand-new flooring and a fully renovated kitchen featuring sleek cabinetry and contemporary finishes. Both bathrooms have been refreshed with updated light fixtures, mirrors, and vanities, adding a stylish touch to your daily routine. Perfectly located with easy access to schools, shopping, parks, and public transit, this home offers convenience for families and professionals alike. The functional layout and fresh renovations make it an ideal choice for anyone seeking a low-maintenance lifestyle in a vibrant community. Don't miss this opportunity to own a newly updated unit in a desirable area—schedule your viewing today!

Built in 1972

Essential Information

MLS® #	E4447567
Price	\$229,000
Bedrooms	1
Bathrooms	1.50
Full Baths	1
Half Baths	1
Square Footage	1,056
Acres	0.00



Year Built	1972
Type	Condo / Townhouse
Sub-Type	Townhouse
Style	2 Storey
Status	Active

Community Information

Address	126 Dickinsfield Court
Area	Edmonton
Subdivision	Evansdale
City	Edmonton
County	ALBERTA
Province	AB
Postal Code	T5E 5V8

Amenities

Amenities	On Street Parking, Parking-Plug-Ins, Vinyl Windows
Parking Spaces	1
Parking	No Garage, Stall

Interior

Appliances	Dishwasher-Built-In, Dryer, Refrigerator, Stove-Electric, Washer
Heating	Forced Air-1, Natural Gas
Stories	2
Has Basement	Yes
Basement	Full, Unfinished

Exterior

Exterior	Wood, Vinyl
Exterior Features	Public Transportation, Shopping Nearby
Roof	Asphalt Shingles
Construction	Wood, Vinyl
Foundation	Concrete Perimeter

Additional Information

Date Listed	July 14th, 2025
Days on Market	1
Zoning	Zone 02
Condo Fee	\$204

DATA IS DEEMED RELIABLE BUT IS NOT GUARANTEED ACCURATE BY THE REALTORS® ASSOCIATION OF EDMONTON. COPYRIGHT 2025 BY THE REALTORS® ASSOCIATION OF EDMONTON. ALL RIGHTS RESERVED.Trademarks are owned or controlled by the Canadian Real Estate Association (CREA) and identify real estate professionals who are members of CREA (REALTOR®, REALTORS®) and/or the quality of services they provide (MLS®, Multiple Listing Service®)

Listing information last updated on July 14th, 2025 at 11:32pm MDT