

## \$245,000 - 102 4835 104a Street, Edmonton

MLS® #E4449154

**\$245,000**

2 Bedroom, 1.00 Bathroom, 860 sqft

Condo / Townhouse on 0.00 Acres

Empire Park, Edmonton, AB

**JUST LIKE NEW AT SOUTHVIEW COURT!**

Immaculate 2 bed + 1 bath, main floor, condo in the desirable Empire Park community!

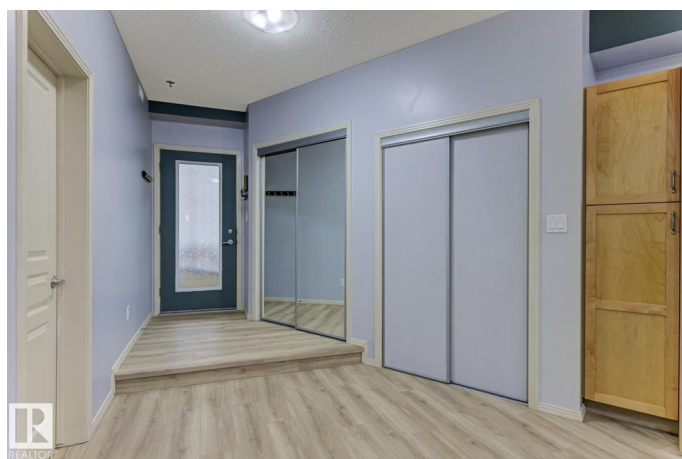
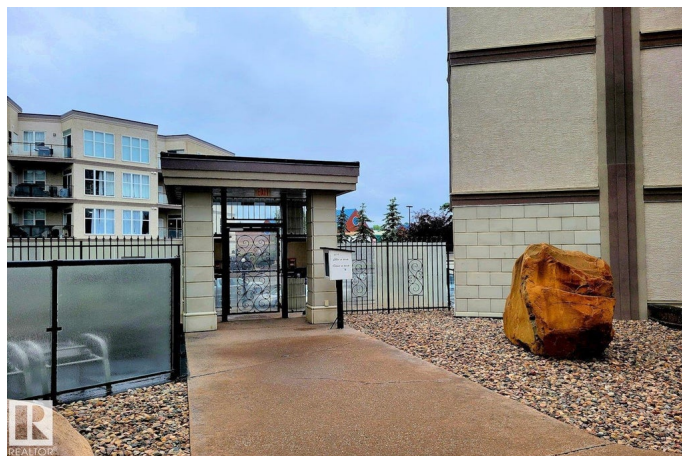
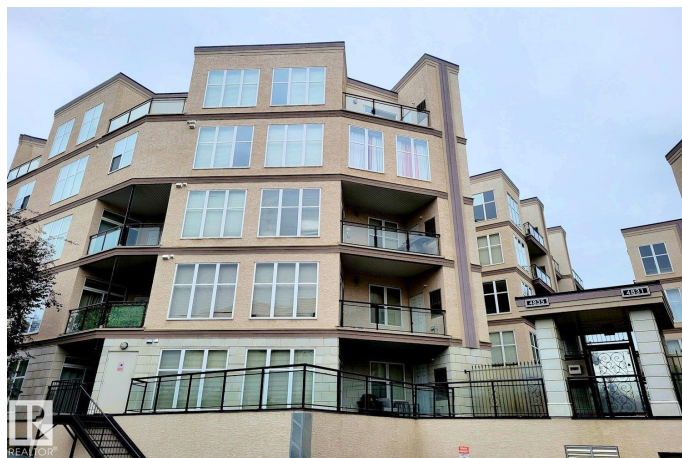
Features include: 9 ft ceilings, modern kitchen with Quartz countertops, newer appliances, breakfast bar, generous dining area and in-suite laundry. The bright living room with large windows opens onto the north facing, private patio overlooking a green space.

Upgrades include: brand new laminate flooring, renovated bathroom and fresh paint throughout. **RARE FIND! THREE UNDERGROUND PARKING STALLS**, one single and one tandem with two storage cages! Parking stalls can be rented to help pay your condo fees! Building amenities include elevators and visitor parking. Walking distance to Italian Shopping Centre, Superstore and tons of other amenities. Quick access to U of A, Southgate Mall, ETS, LRT and major routes. **MOVE IN READY!**

Built in 2005

### Essential Information

MLS® #	E4449154
Price	\$245,000
Bedrooms	2
Bathrooms	1.00
Full Baths	1



Square Footage	860
Acres	0.00
Year Built	2005
Type	Condo / Townhouse
Sub-Type	Lowrise Apartment
Style	Single Level Apartment
Status	Active

### Community Information

Address	102 4835 104a Street
Area	Edmonton
Subdivision	Empire Park
City	Edmonton
County	ALBERTA
Province	AB
Postal Code	T6H 0R5

### Amenities

Amenities	Ceiling 9 ft., Intercom, Parking-Extra, Parking-Visitor, Sprinkler System-Fire, Storage-Locker Room, Vinyl Windows
Parking Spaces	3
Parking	Heated, Stall, Tandem, Underground

### Interior

Appliances	Dishwasher-Built-In, Dryer, Microwave Hood Fan, Refrigerator, Stove-Electric, Washer, Window Coverings
Heating	Forced Air-1, Natural Gas
# of Stories	4
Stories	1
Has Basement	Yes
Basement	None, No Basement

### Exterior

Exterior	Wood, Stucco
Exterior Features	Fenced, Flat Site, Landscaped, Public Transportation, Schools, Shopping Nearby
Roof	Tar & Gravel
Construction	Wood, Stucco
Foundation	Concrete Perimeter

**Additional Information**

Date Listed	July 23rd, 2025
Days on Market	41
Zoning	Zone 15
Condo Fee	\$412

DATA IS DEEMED RELIABLE BUT IS NOT GUARANTEED ACCURATE BY THE REALTORS® ASSOCIATION OF EDMONTON. COPYRIGHT 2025 BY THE REALTORS® ASSOCIATION OF EDMONTON. ALL RIGHTS RESERVED.Trademarks are owned or controlled by the Canadian Real Estate Association (CREA) and identify real estate professionals who are members of CREA (REALTOR®, REALTORS®) and/or the quality of services they provide (MLS®, Multiple Listing Service®)

Listing information last updated on September 2nd, 2025 at 8:32pm MDT